

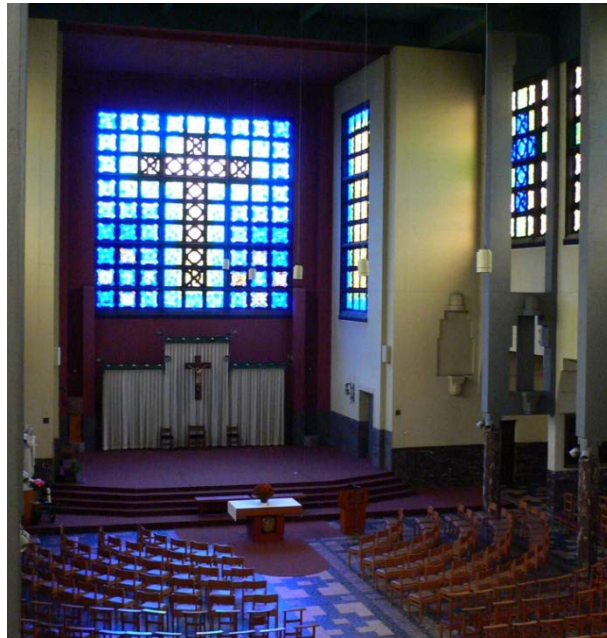
Colloquium:

De kerken in het Brussels Hoofdstedelijk Gewest Cultusgebouwen en herbestemming

De Brigittinen -17 december 2013

Evaluatiemethode van de erfgoedkundige waarden en van het herbestemmingspotentieel van de kerken

Brusselse voorbeelden



Steven Van Bocxlaer
Valerie Vermandel
Eva Weyns

INLEIDING

SINT-HUBERTUSKERK,
WATERMAAL-BOSVOORDE

Bouw: 1911-1914 en 1919-1939
Stijl: Sint-Lucasneogotiek
Architect: Pierre Langerock

Gesloten in 2009: slechte staat



Bestudeerd in 2013 door
C. Biagioli, M. E. Siguencia Avila, N.
STAMOS En S. Van Bocxlaer

SINT-VINCENTIUS À PAULO
ANDERLECHT

Bouw: 1936-1937
Architect: Jos Smolderen



Bestudeerd in 2013 door
M. Jaspers, P. Lanchana, V. Vermandel

UITWERKING VAN EEN METHODOLOGIE

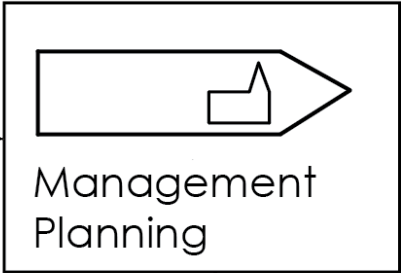
Huidige toestand
van de kerk



Synthese



Conclusies



Visie op de
toekomst van
de kerk



Analyse

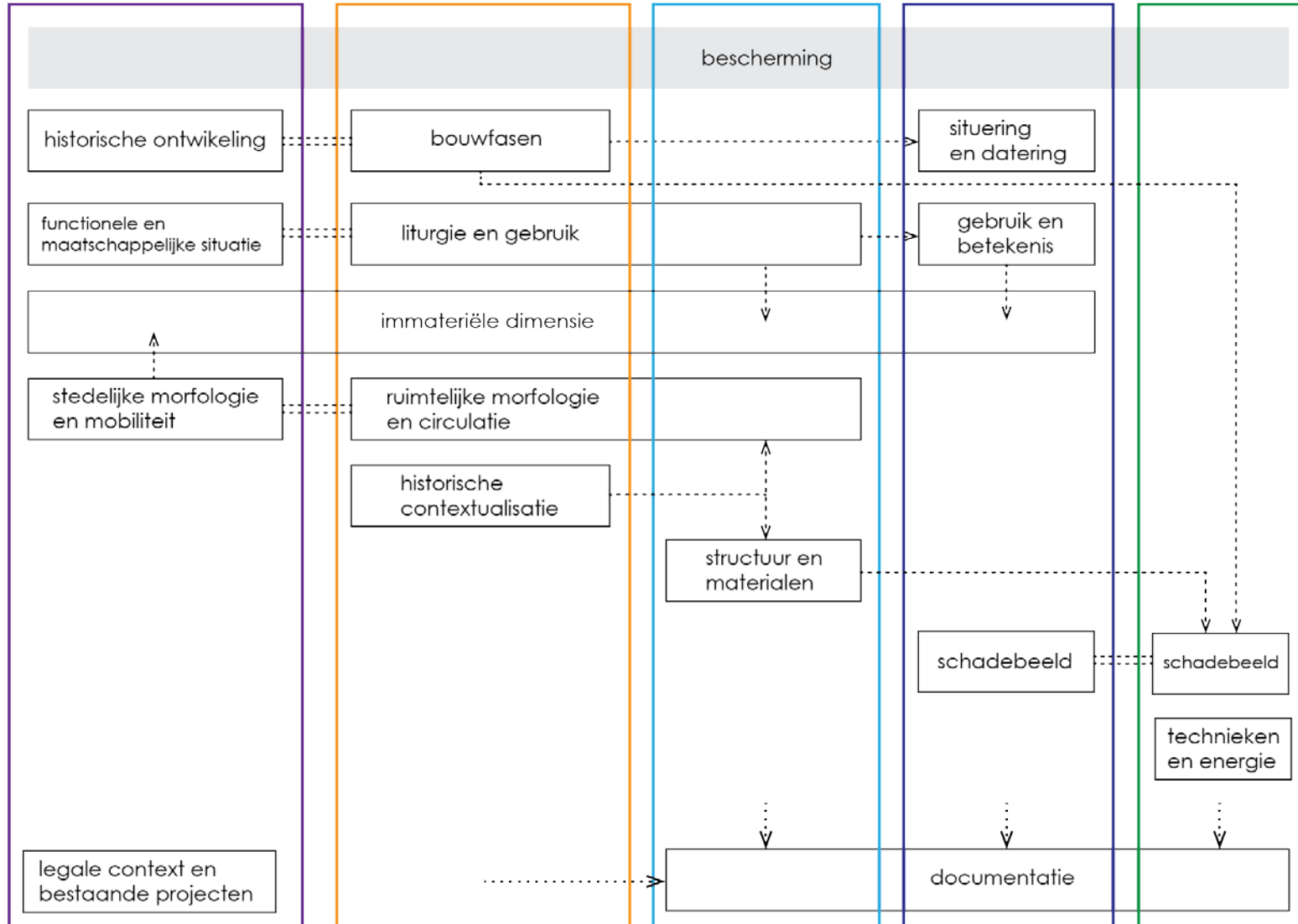
Stedenbouwkundige analyse

Historische analyse

Architecturale analyse

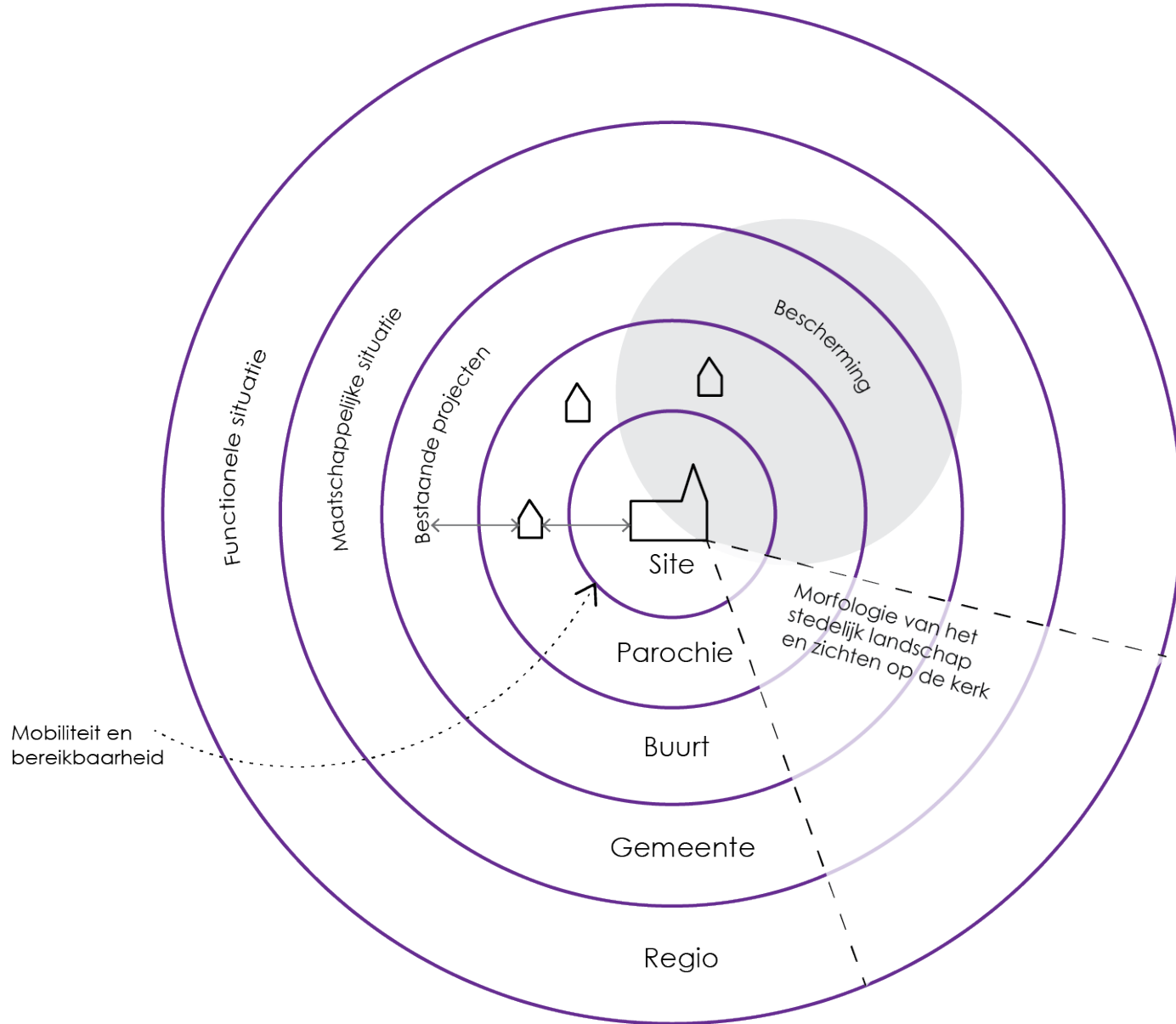
Interieur analyse

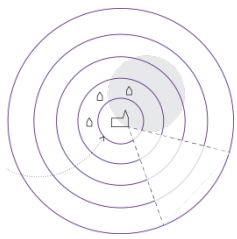
Technische analyse





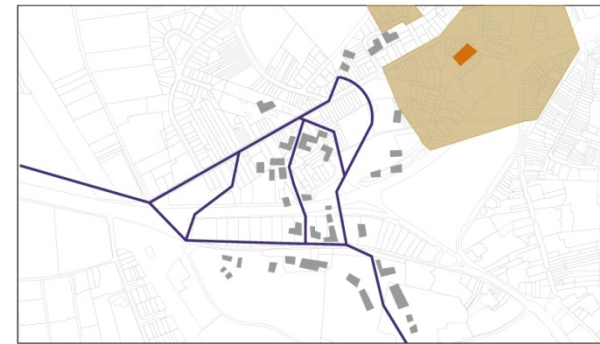
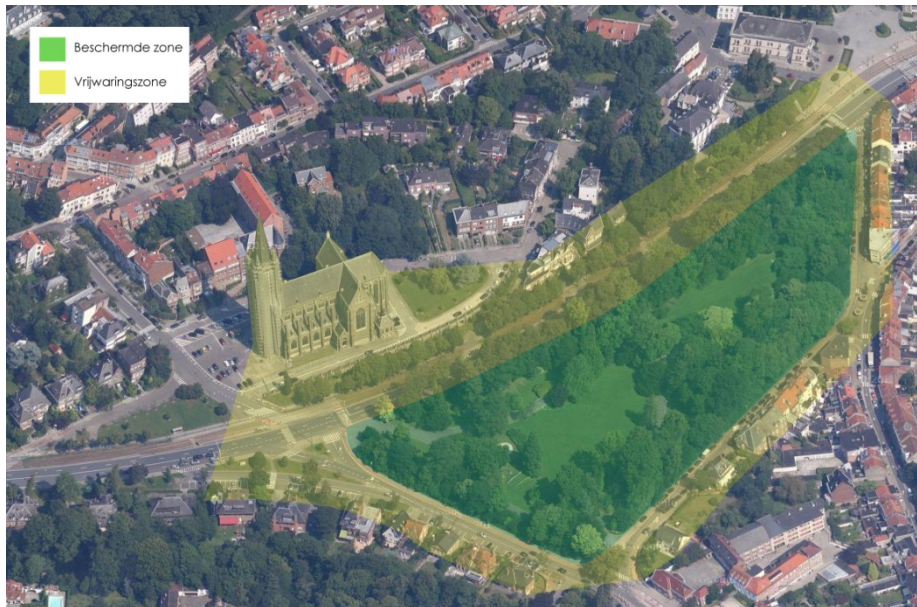
Stedenbouwkundige analyse





Sint-Hubertuskerk Watermaal-Bosvoorde

- Ontstaan Bosvoorde: jachtactiviteit hertogen van Brabant
- Parochie van Sint-Hubertus: patroonheilige van de jagers
- Aanleg van wegen onder Leopold II: Delleurlaan en Jagersveldpark
- Bescherming Jagersveldpark: twee "zijden" van de kerk



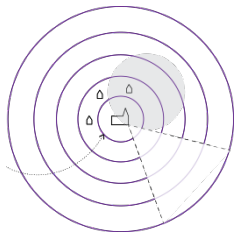
1777



1906



2013



Sint-Vincentius Anderlecht

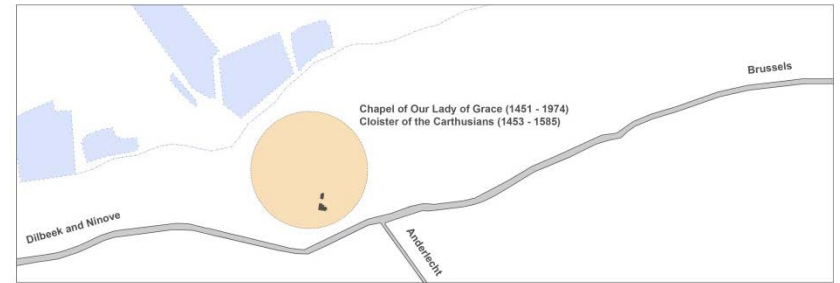
- Multiculturele wijk
- Contrast tussen drukke steenweg en groene zone



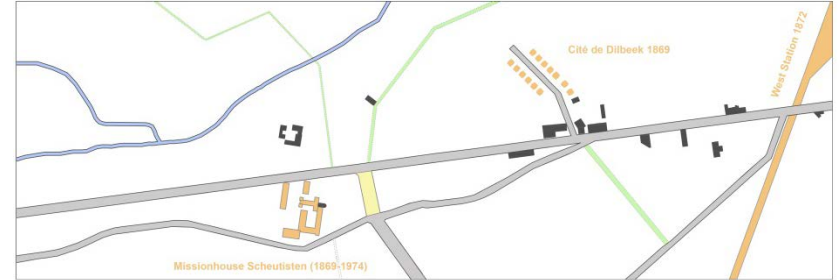
Achterkant van de kerk



Voorkant van de kerk



1555



1875



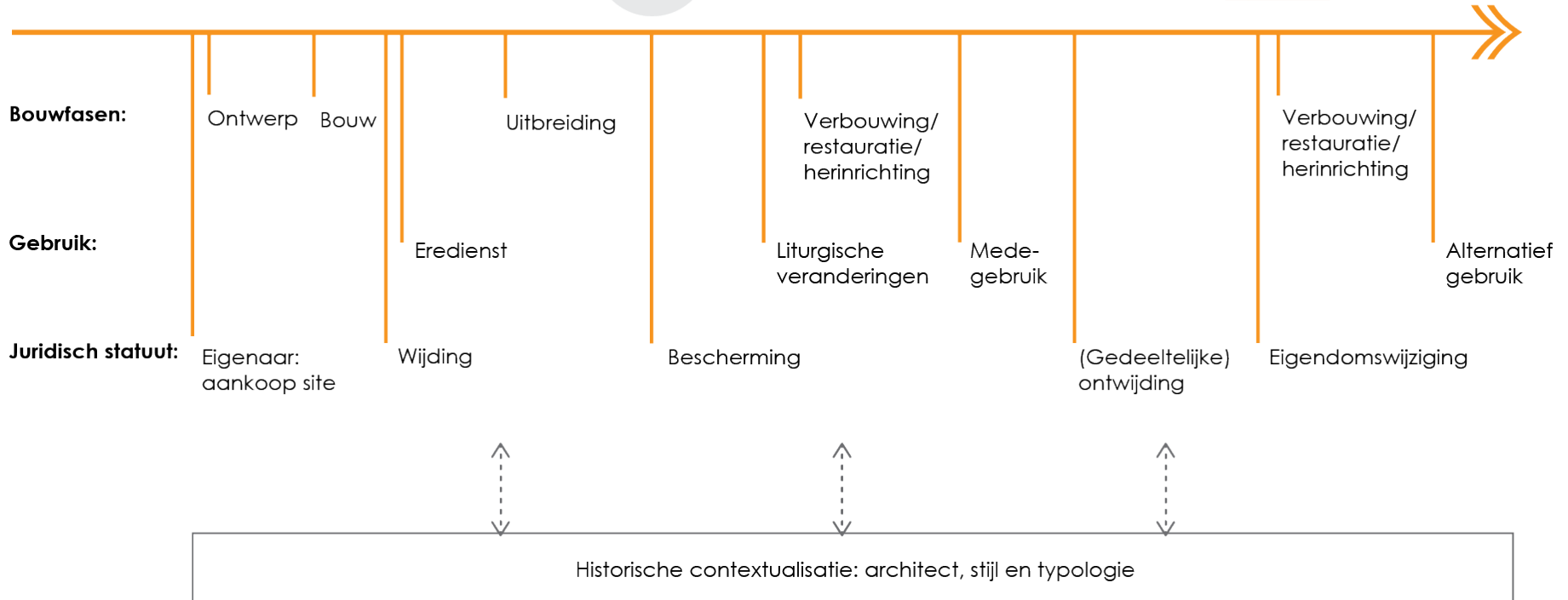
1937



2013

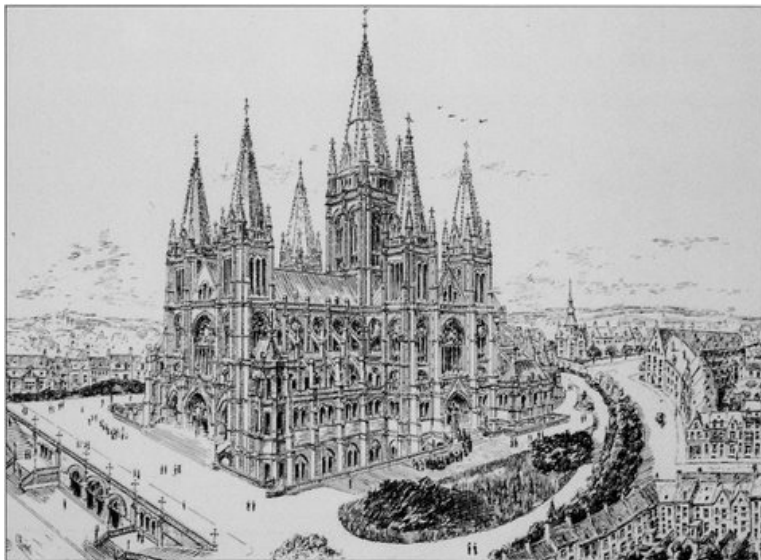


Historische analyse

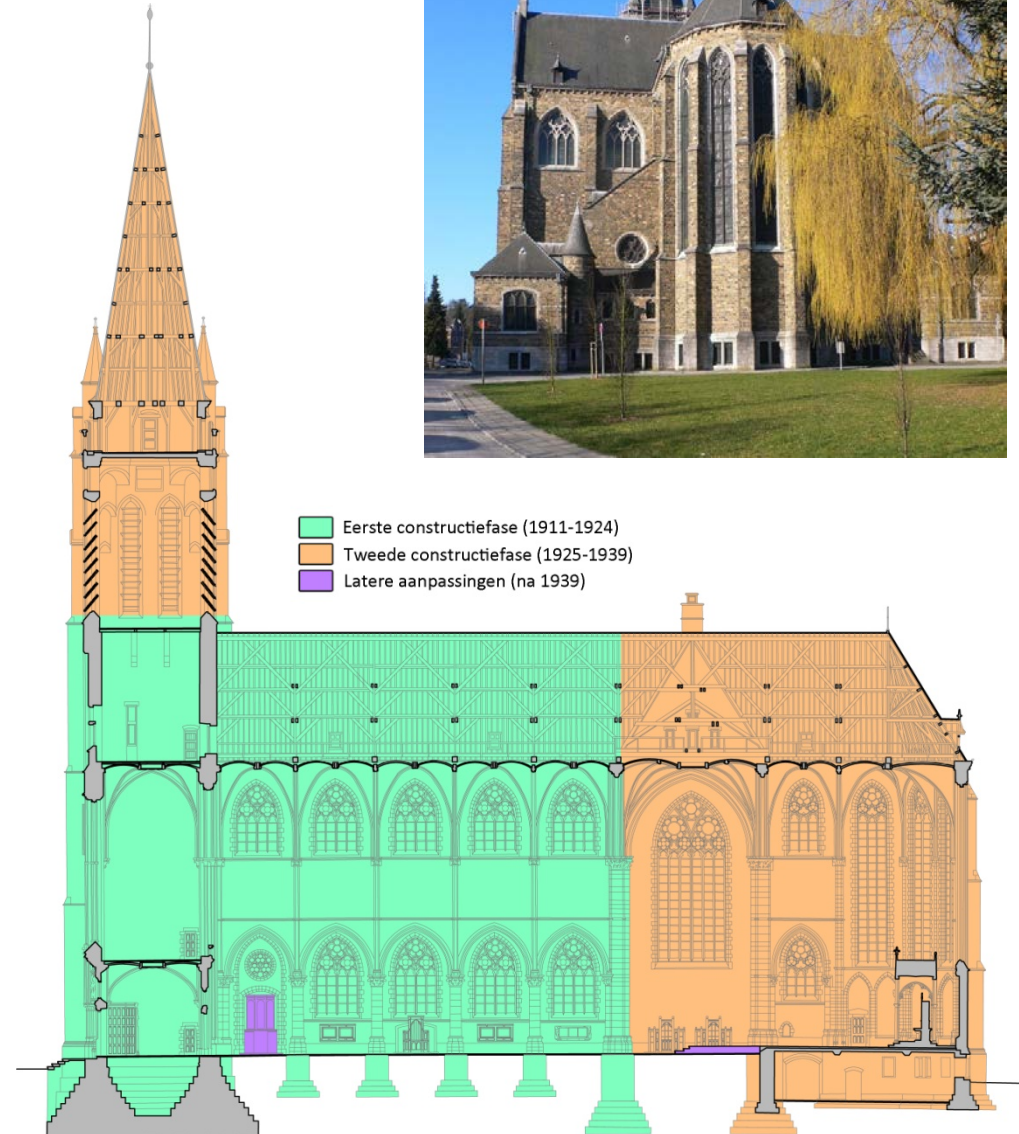
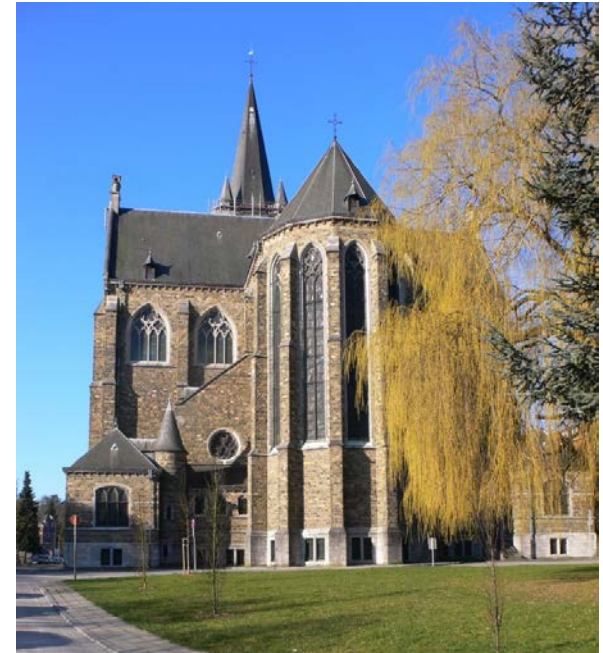


Sint-Hubertuskerk Watermaal-Bosvoorde

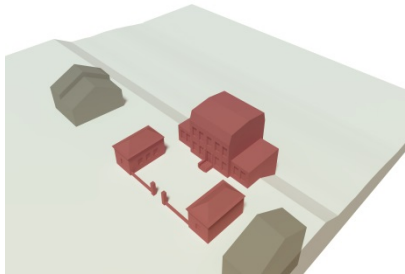
- 1911: Begin van de bouw (plannen door Pierre Langerock)
- 1924: Eerste fase afgewerkt (schip en basis toren)
- 1925-1939: Tweede fase (transept, koor en torenspits)
- Neogotiek als “nationale stijl”: connectie met hertogen van Brabant en Belgische dynastie.



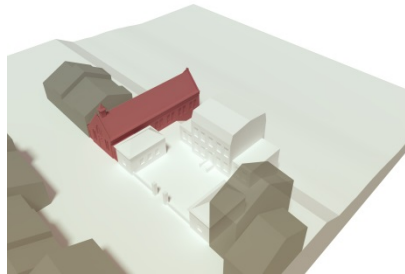
BASILIEK VAN KOEKELBERG,
BASILIQUE DE KOEKELBERG,
P. LANGEROCK



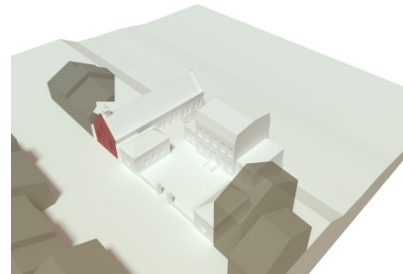
Sint-Vincentius Anderlecht



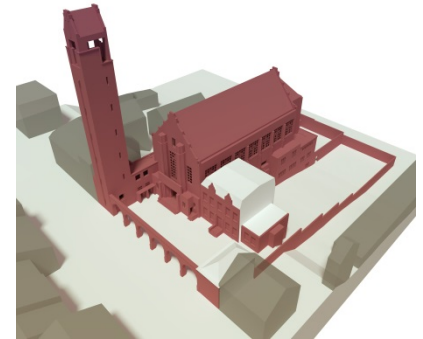
1883



1889



1894



1937



1964



1989



1990-2000



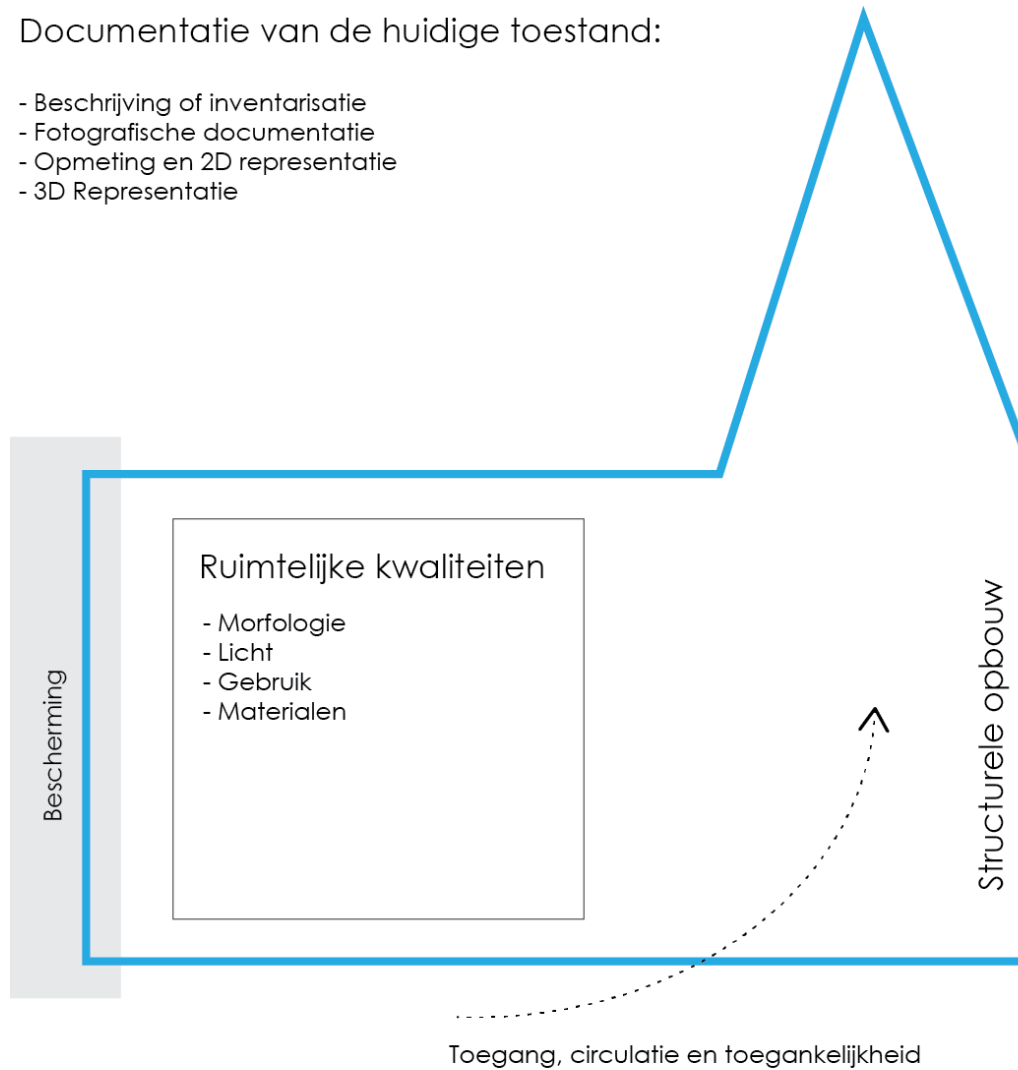
2013

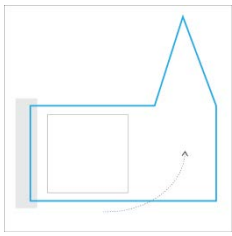


Architecturale analyse

Documentatie van de huidige toestand:

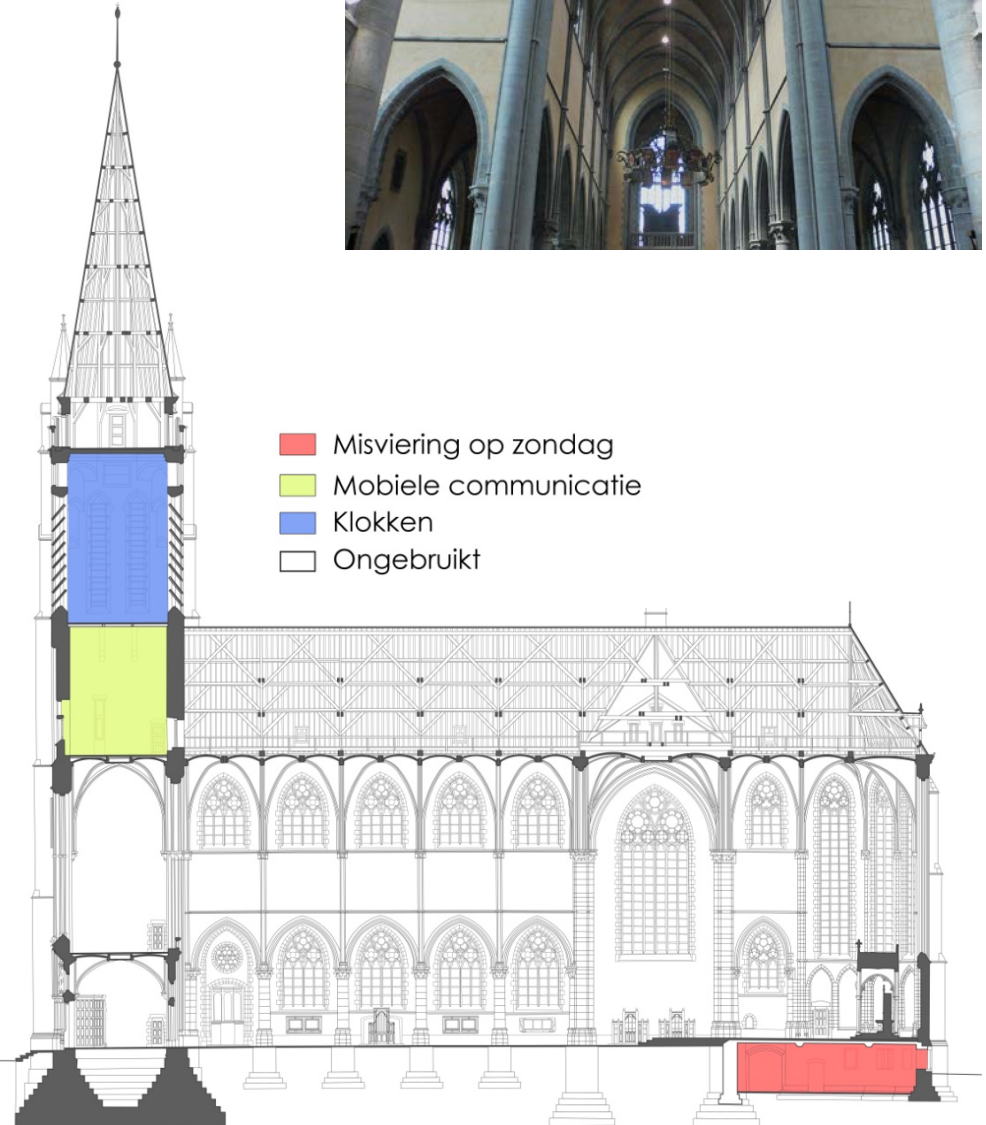
- Beschrijving of inventarisatie
- Fotografische documentatie
- Opmeting en 2D representatie
- 3D Representatie

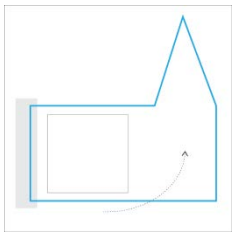




Sint-Hubertuskerk Watermaal-Bosvoorde

- Primaire ruimtes – secundaire ruimtes
- Secundaire ruimtes nog in gebruik!
- Belgische materialen



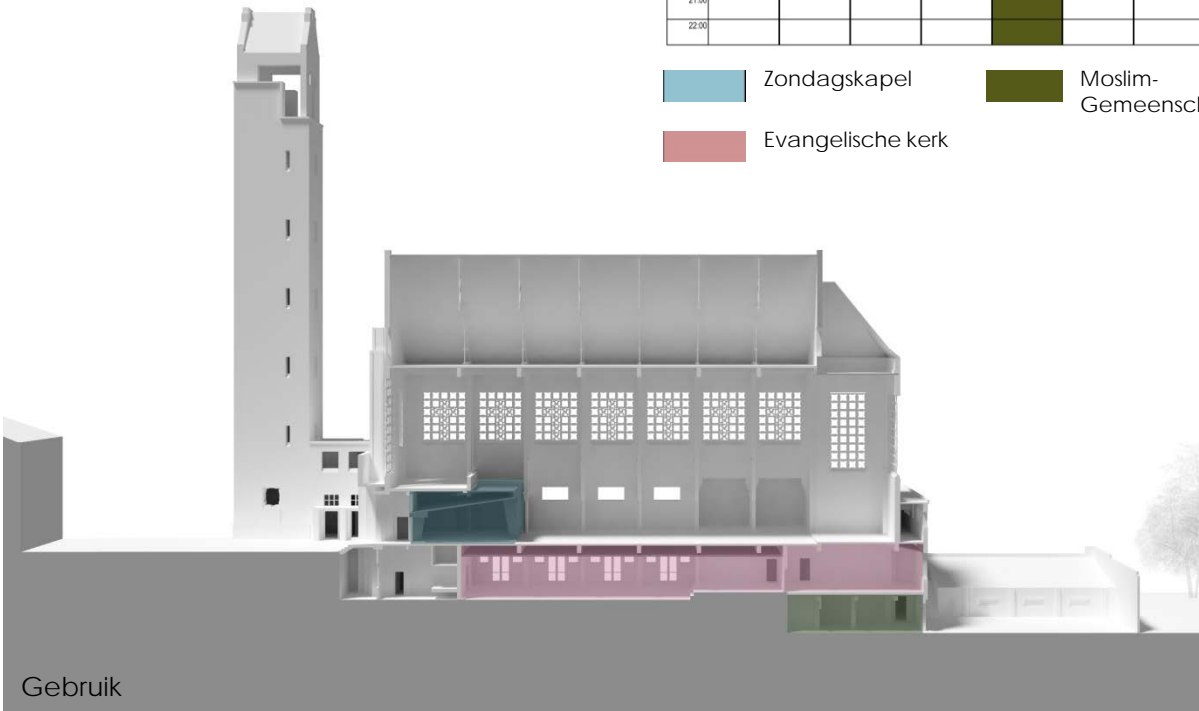


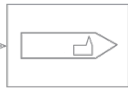
Sint-Vincentius Anderlecht

TIJDSHEMA

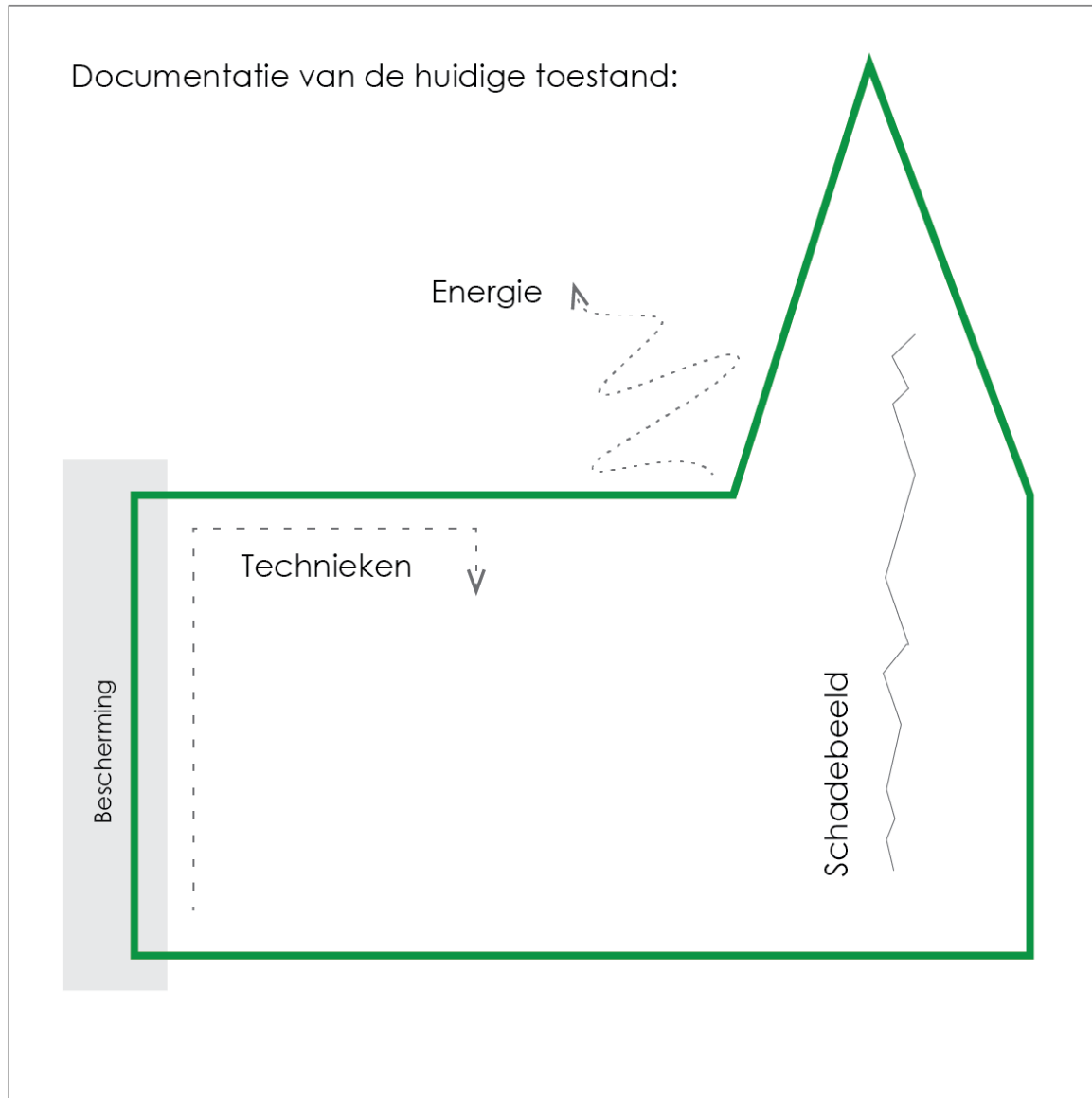
	Monday	Tuesday	Wednesday	Thursday	Friday	Saturday	Sunday
8:00							
9:00							
10:00							Light Blue
11:00							Light Blue
12:00							Red
13:00			Light Blue				
14:00			Light Blue				
15:00							Green
16:00			Red				Green
17:00			Red		Red	Light Blue	
18:00							
19:00					Green		
20:00					Green		
21:00					Green		
22:00							

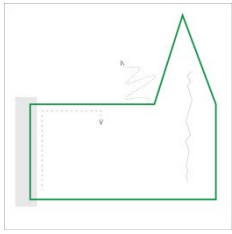
- Zondagskapel
- Moslim-Gemeenschap
- Evangelische kerk





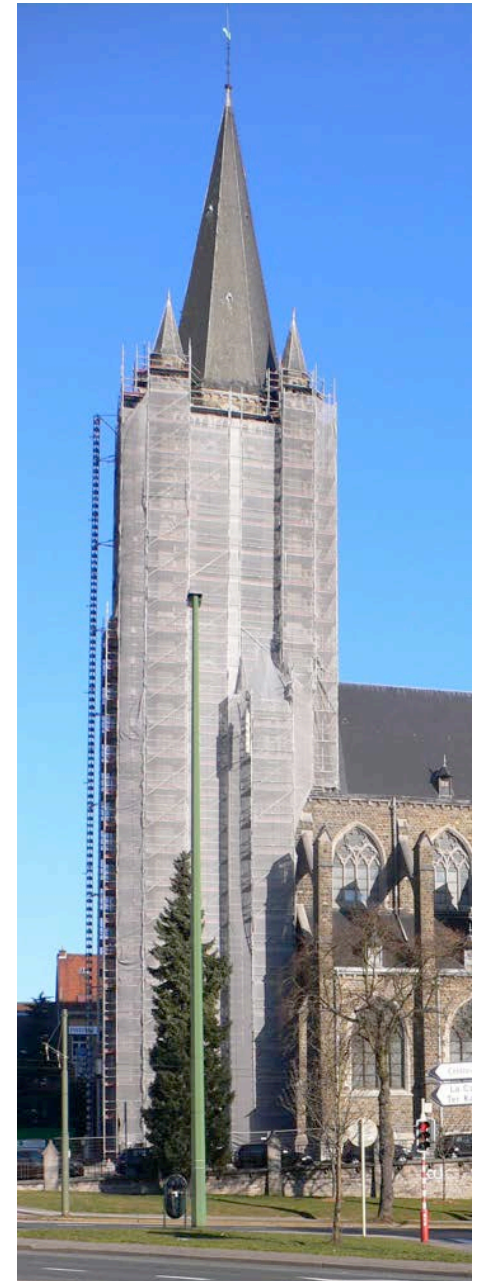
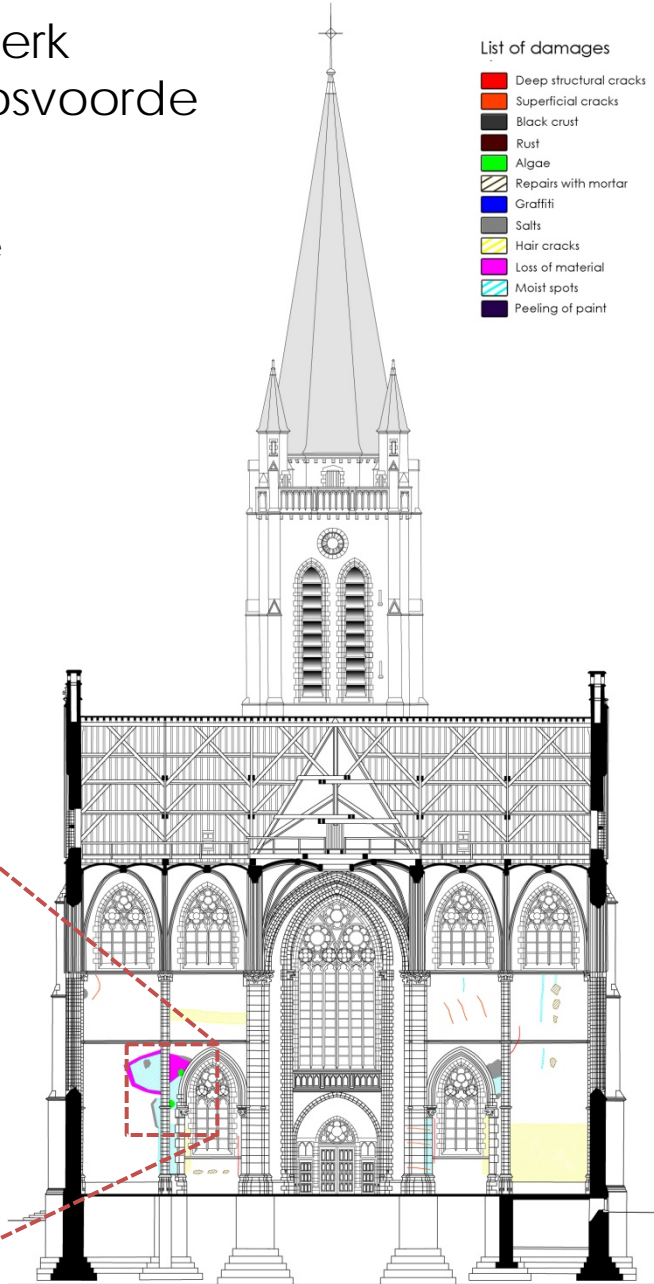
Technische analyse

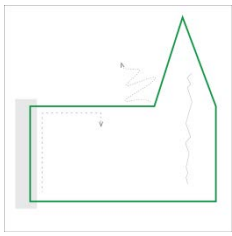




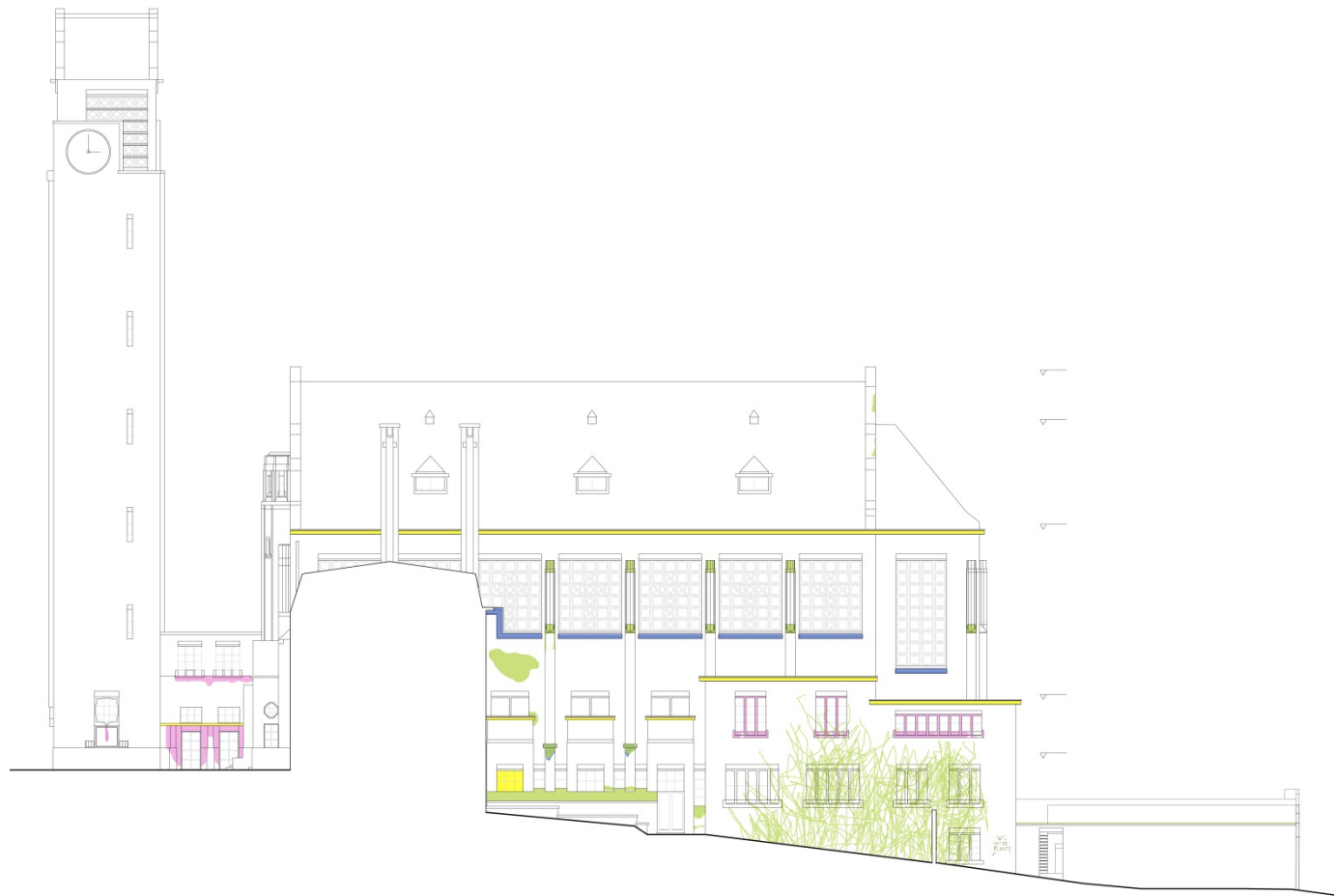
Sint-Hubertuskerk Watermaal-Bosvoorde

- Problemen door waterinfiltratie
- Schade in transeptarmen
- Loskomende stenen in toren






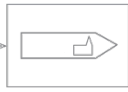
Sint-Vincentius Anderlecht



DEGRADATIES

-  Biologische groei
-  Afschilferende verf
-  Zwarte korst
-  Vervuiling beton
-  Silicone voegen





Interieur analyse

Documentatie van de interieur elementen:

- Beschrijving en inventarisatie
- Fotografische documentatie
- Opmeting en representatie

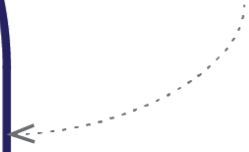
Gebruik



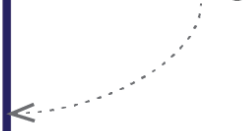
Betekenis



Datering

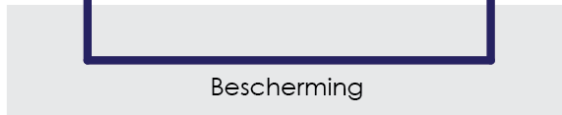


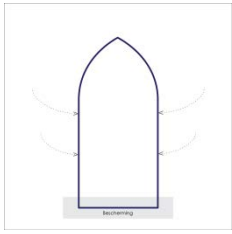
Situering



Materialen en
schadebeeld

Bescherming

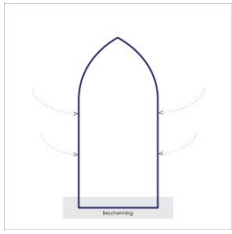




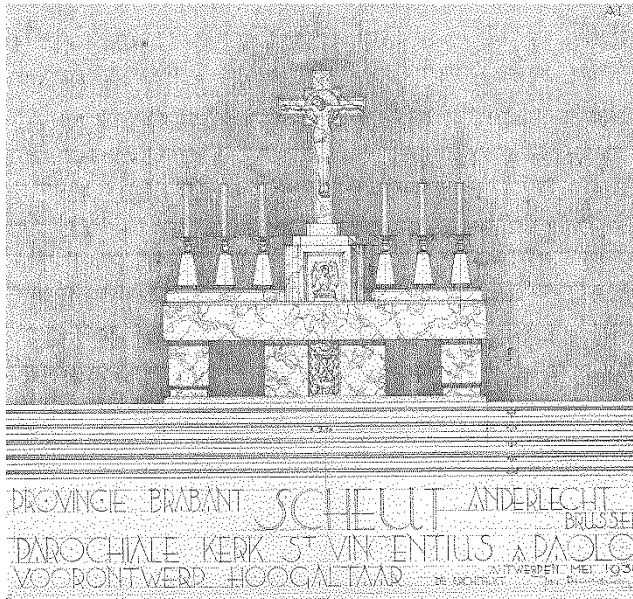
Sint-Hubertuskerk Watermaal-Bosvoorde

- Koorgestoelte Expo '35
- Hoogaltaar omringd door wapenborden
- Glasramen in koor
- Orgels: oksaal en crypte





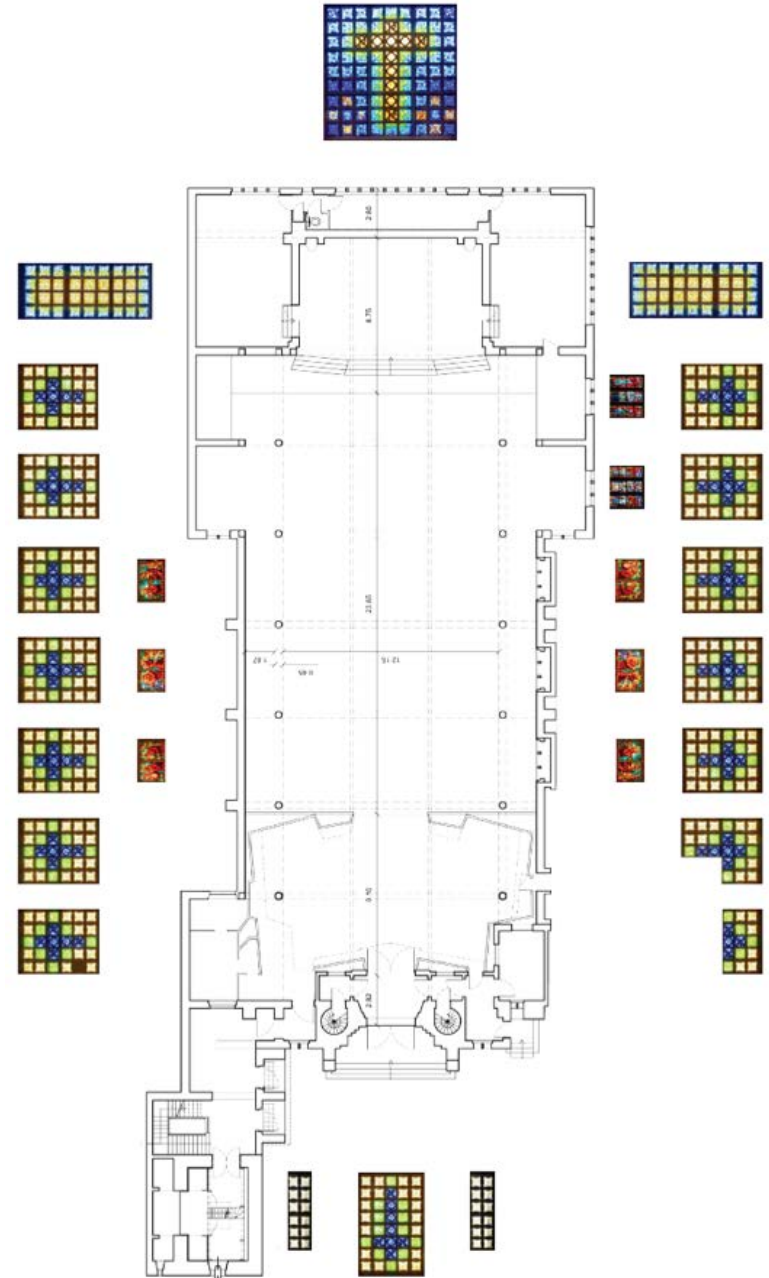
Sint-Vincentius Anderlecht

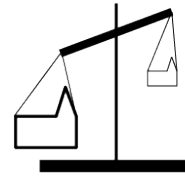


Hoofdaltaar, Archieven Sint-Vincentius



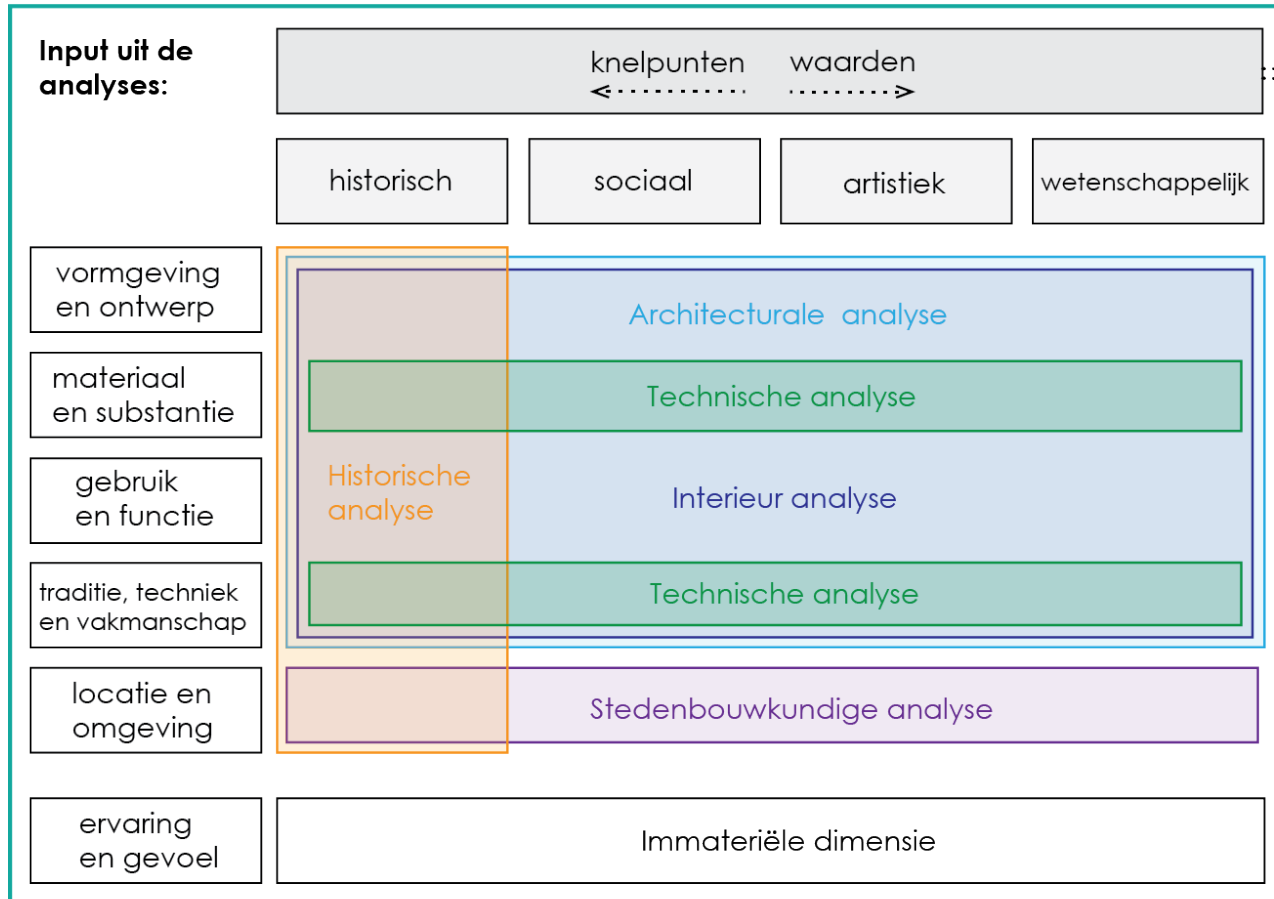
Glas-in-lood in in betonframe boven het koor



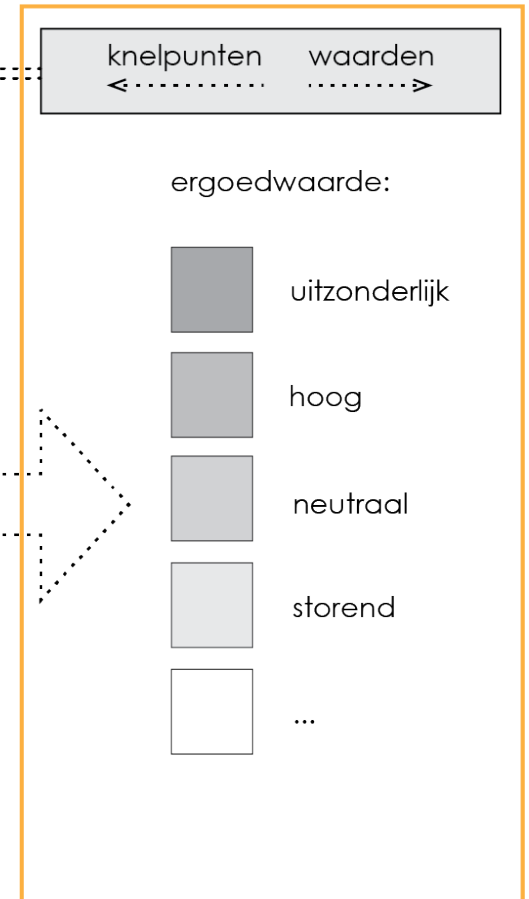


Waardebepaling

Evaluatiegrid



Evaluatieplannen en evaluatiemodel





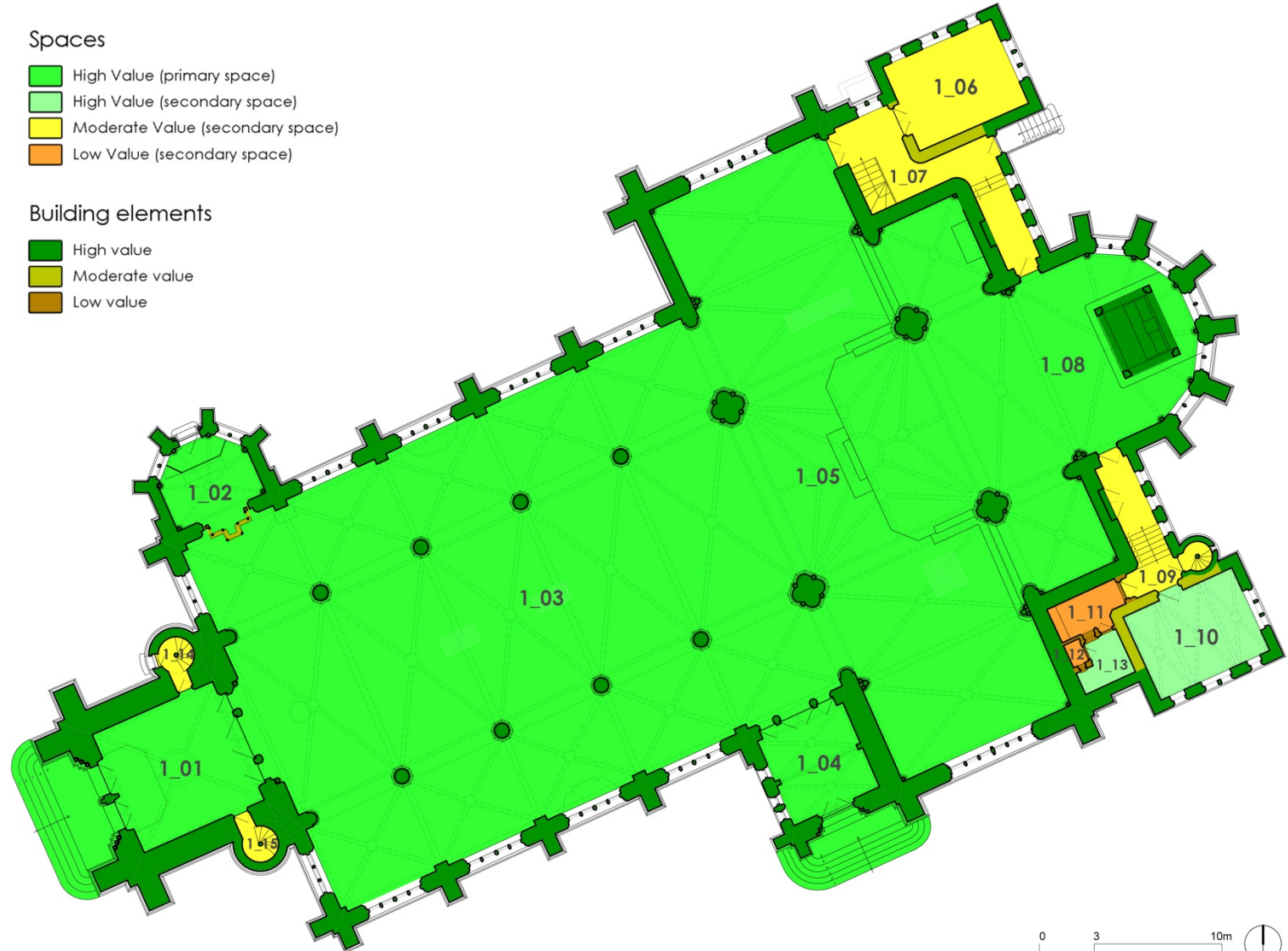
Sint-Hubertuskerk Watermaal-Bosvoorde

Spaces

- High Value (primary space)
- High Value (secondary space)
- Moderate Value (secondary space)
- Low Value (secondary space)

Building elements

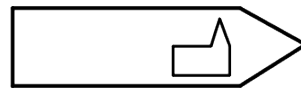
- High value
- Moderate value
- Low value





Sint-Vincentius Anderlecht





Management Planning

Globaal plan voor conservatie






Risico- en interventieplan





Sint-Hubertuskerk Watermaal-Bosvoorde

Building elements






-  Keep, do not change
-  Keep, possible to change
-  Possible to remove





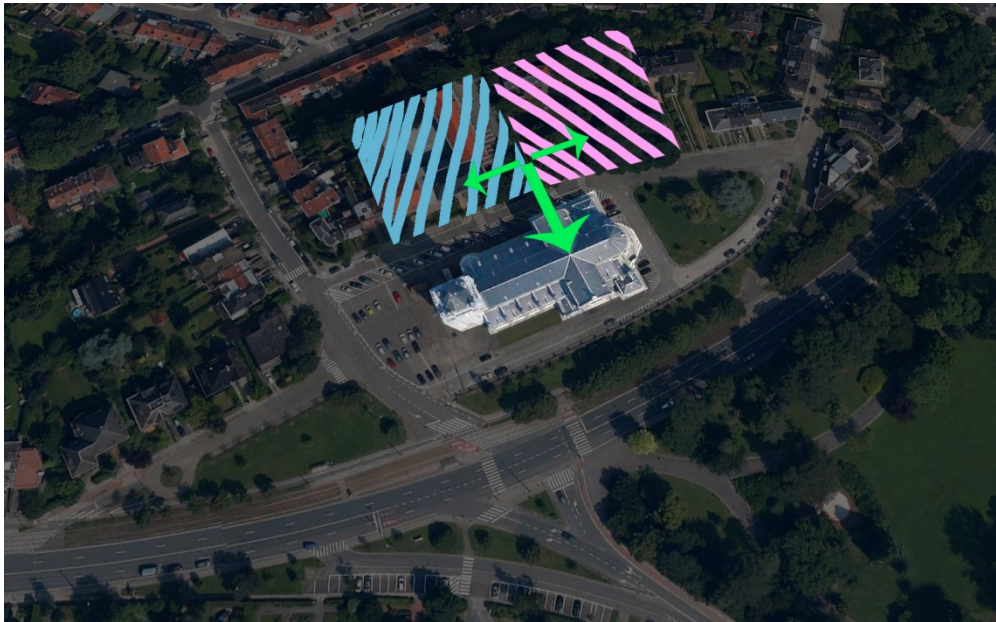
Sint-Vincentius Anderlecht



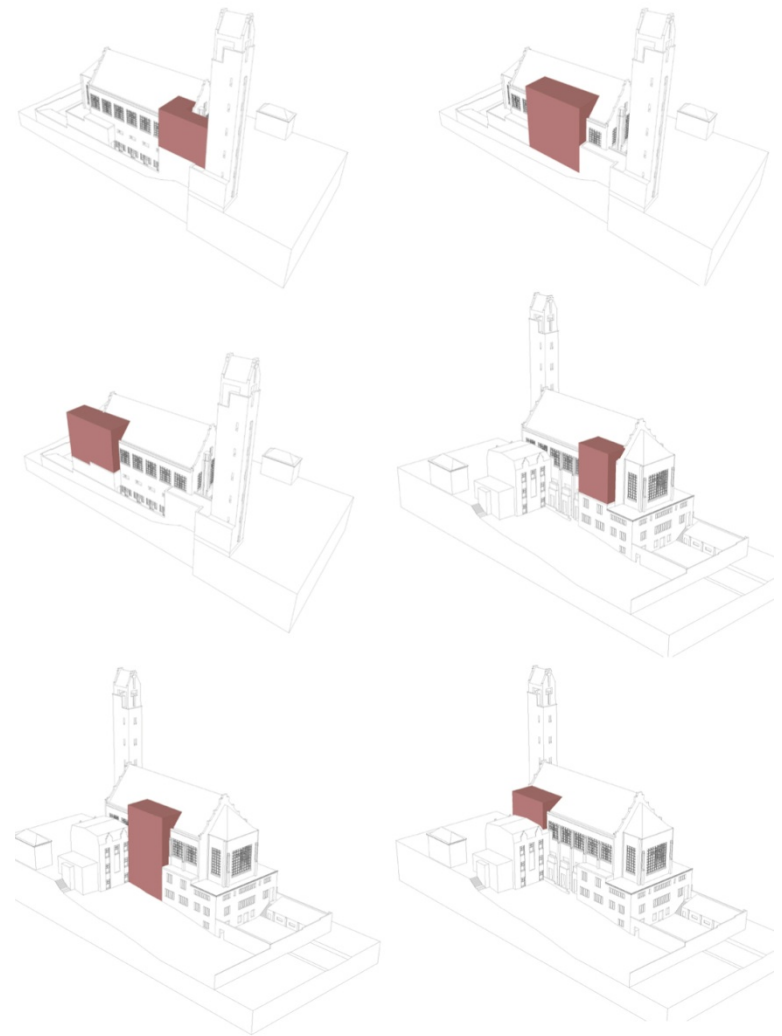
- | | | |
|---|---|--|
|  Reconstruct |  Preserve |  Restore |
|  Neutral |  Neutral, preserve floor |  Demolish |

CONCLUSIE

- Management planning is basis voor projectvoorstel
- Gefundeerde en samenhangende keuzes
- Erfgoedwaarden respecteren
- Inspelen op noden van de betrokkenen



Sint-Hubertuskerk, Watermaal-Bosvoorde
Mogelijke verbinding met basisscholen



Sint-Vincentius, Anderlecht
Studie naar een verticale circulatie

Bedankt voor uw aandacht